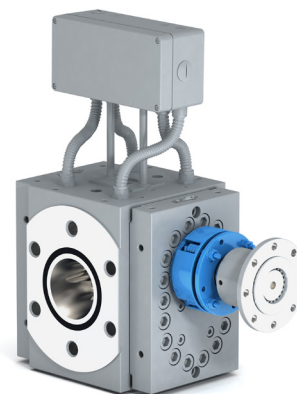


BKG® BlueFlow™ Gear Pump

RP-LE / RP-LF (Reactor Discharge Pump)

BKG BlueFlow Gear Pump types RP-LE / RP-LF are mainly designed for the discharge of low to medium viscosity melts, such as adhesives or polyamides out of reactor vessels or mixing and storage tanks. Additionally, they are used for low viscous materials in extrusion processes.



Features

Type:	RP-LE
Application:	For the discharge of low to medium viscous melts from reactor vessels and tanks
Feature:	Process-specific connection geometry Special sealing system
Optional:	Liquid tempered

Type:	RP-LF
Application:	Provides the same advantages as the RP-LE model with the additional benefit of heating the pump with a fluid

Old vs. New

- Higher specific volume in a smaller housing
- Metric system
- Two melt immersion points inlet/outlet
- Dynamic seal system with stuffing box

Benefits

- Discharge pumps designed specifically for low to medium viscosity melts
- Pump inlet optimized to maximize filling performance through various channel geometries
- Drive-side threaded shaft seal with stuffing box packing leads to reduced operating costs
- Borings for melt pressure and melt temperature sensors integrated in the pump housing provides enhanced process diagnostic capabilities
- Optimized operating clearances to process polymers with a low viscosity

Technical Information

Size	33 - 3201
Throughput*	7 – 12,700 kg / hr (15 – 28,000 lbs / hr)
Specific volume	33 – 3201 cm ³ / rev (2.02 – 195.3 in ³ / rev)
Viscosity	2 – 2,000 Pas
Temperature	Up to 350°C (662°F)
Heating	Electric or Fluid
Pump inlet	1 - 15 bar (14.5 - 217.56 psi)
Pump outlet	max. 265 bar (3,843 psi)
Differential pressure	max. 250 bar (3,626 psi)

* Higher or lower throughputs on request.

Nordson PPS GmbH
Coermühle 1
48157 Münster / Germany
+49.251.21405.0 **Phone**

USA
+1.828.326.9888 **Phone**

China
+86.21.57850918 **Phone**

www.nordsonpolymerprocessing.com | info@nordsonpolymerprocessing.com
© 2016 Nordson PPS GmbH
Printed in Germany
10/2016

